

Lafuma[®]

ElectroMagnetic Water Flow Meter



RS485

$\pm 0.3\%$

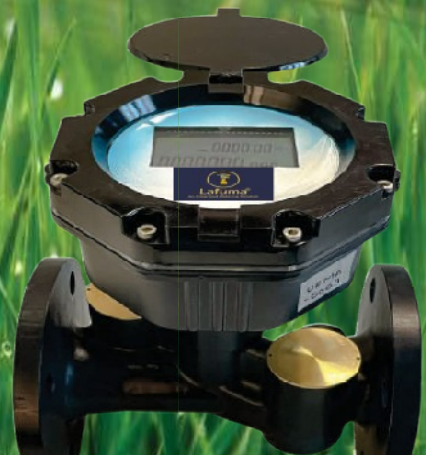
Smart
High
Accuracy

Optional Telemetry
System

Pressure
1~100 Bar
Max.

°C
100

Temperature



ITECHFLOW PVT. LTD

30, Jhotwara Industrial Area, Jaipur, Rajasthan - 302012 (India.)

Model: Lafuma -UFBT-001

Concerned about rising water costs and environmental impact ? Traditional water monitoring systems are slow and clunky. Introducing Lafuma-ITECHFLOW in line ultrasonic flow meter, designed for real-time water management. LAFUMA goes beyond traditional meters by offering a complete water management solution with cutting-edge technology.



- Lafuma-UFBT-001
- Long-Term Stability and Wide Measurement Range.
 - Remote Monitoring, cloud data storage & web based dashboard support through ThingzCloud.
 - LTE (4G) communication for efficient data transmission at user-defined intervals.
 - 5+ Year Battery Life (2D Lithium), @ user defined send intervals, default at 6hrs.
 - Minimal System Pressure Loss.
Log Interval 6 hrs each (Configurable)



Model: Lafuma-UFBT-001

Product specification

Material	CastIron
AvailableSizes	DN25 to DN200
Weight (DN25 to DN200)	500gms to 28Kgs
MountingStyle	Threaded/Flanged
Certification Metrology	SO4064:2014
Mounting Style	Horizontal

specification

Working Principle	Ultrasonic Transit Time	Battery Voltage Output	Li-SOCL2, 3.6V, 38Ah
Transducer Resonant Frequency	1Mhz	Minimumflowrate m ³ /hr (Q1)	0.15(DN25) to 10(DN200)
TemperatureRange	+5°Cto+55°C	Maximumflowrate m ³ /hr(Q3)	7(DN25)to300(DN400)
PressureRange	0.03MPato1.6Mpa	Application <ul style="list-style-type: none"> • Suitable for All Conductivity Application • From Clean Liquidto Slurries & Pastes with High Solids Content. • Energy Measurement in Commercial Building • Abrasion, Chemical & Vaccume Resistance • Suitable for High Temperature 	
Accuracy	±2%		
IngressProtection	Ip68		
Connectivity	LTE(4G)		
Display	LCD/ 60x40(35) mm		
EnclosureMaterial	ABS (DN25) Above DN25, diecaste Aluminium		

Lafuma®

Optional Telemetry System



DESIGNED FOR MODERN DATA SECURITY

- Unlike legacy solutions that were designed in a different era and patched over time, Flowline V1.0 is purpose-built to aggregate and process sensor data securely. Cyber threats continuously evolve, and your industrial IoT architecture should as well. Flowline V1.0's architecture ensures always up-to-date cloud software and seamless over-the-air firmware patches for on-premise devices



(10)



More Information
Website www.itechflow.com

ITECHFLOW PVT. LTD

30, Jhotwara Industrial Area, Jaipur, Rajasthan - 302012 (India.)

✉ itechflow1@gmail.com, info@itechflow.com | 🌐 web. www.itechflow.com

Contact. +91 8851783652, +91 9660249450



Copyright © 2012-2023 ITECHFLOW PVT. LTD. All rights reserved